



ADVANCING MODERN **HEALTHCARE**

www.nemrac.com.ph

OUR PRODUCTS



GENERAL USE ASPIRATOR MODEL 3060

- General Use Aspirator for hospitals, clinics or home
- Compact, Reliable and Economical
- Generates 559 mm Hg of vacuum pressure and 26 lpm of flow rate at open flow
- Has two selectable reusable bottles for high volume procedures and comes with suction tubing



GASTRIC DRAINAGE CONSTANT/INTERMITTENT ASPIRATOR MODEL 6036

- Mobile Aspirator specialize in gastric drainage for hospitals and clinics
- Generates -250 mm Hg for constant suction and up to -200 mm Hg for intermittent suction
- 20 lpm and 3-4 lpm respective flow rates at open flow
- Fully independent constant and intermittent modes
- Each mode has its own collection system (collection unit and suction tubing)
- Adjustable suction timing allows the clinician to tailor treatment to fit individuals
- Easy-to-store and transport compact design with a flat stainless steel top
- Convenient Storage for 6' electrical cord with hospital-grade plug
- Disposable hydrophobic bacteria filter helps prevent fluid and aerosol contamination



SURGICAL ASPIRATOR MODEL 3940

- Heavy duty, high performance mobile aspirators engineered for surgical suites
- 635 mm Hg of vacuum pressure and a 34 lpm flow rate at open flow
- Maximum reliability thanks to the robust, maintenance-free and oil-free diaphragm pump design
- Stable, heavy duty cart design with flat stainless steel sides and top
- Mechanical shut-off float helps prevent fluid contamination
- Convenient storage drawer for suction accessories



OPTIVAC AC/DC PORTABLE ASPIRATOR

- AC/DC general use portable aspirator
- Generates -550 mm Hg of vacuum pressure and a flow rate in excess of 30 lpm at open flow
- Perfect for handle emergency situations
- 3 hours run time at maximum vacuum on a fully-charged battery
- 1 hour run time after just 2 hours of charging
- Will run at full performance on AC power even with a depleted battery
- Battery maintenance system keep the battery fully charged but not over-charged
- Sealed water-resistance unit is easy to clean and minimizes potential contamination or damage to the pump and battery.



TABLETOP ASPIRATOR MODEL 305

- General use Tabletop Aspirator
- -550 mm Hg of vacuum pressure and a greater than 30 lpm flow rate at open flow
- Maintenance-free and oil-free diaphragm pump ensures maximum reliability
- Easy to store, the 305 takes up less than one square foot of space
- Enclosed pump design
- Disposable hydrophobic bacteria filter helps prevent fluid and aerosol contamination

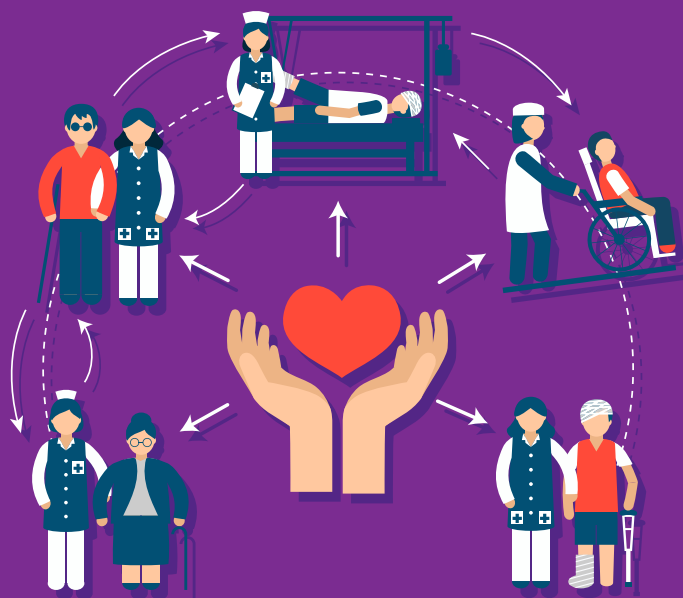


THORACIC DRAINAGE ASPIRATOR MODEL 6020

- Mobile Aspirator specialized for Thoracic Drainage
- Generates -25 cm H₂O of vacuum pressure with 2.3 lpm flow rate at open flow
- Silent operation due to a Gomco exclusive thermotic pump design
- Water seal in the collection bottle prevents aspirated air from re-entering the chest
- Easy-to-store and transport compact design with a flat stainless steel top
- Convenient storage for 6' electrical cord with hospital-grade plug
- Disposable hydrophobic bacteria filter helps prevent fluid and aerosol contamination

OUR PRODUCTS

- Medical Professional Apparel & Accessories
- Respiratory Equipment
- Health & Wellness Products
- Diabetes Supplies
- Urological Supplies
- Ostomy Supplies
- Incontinence Care for Adults and Pedia
- Mobility & Ambulatory Aids
- Physical Therapeutic Products
- Diagnostics Kits
- Laboratory Supplies, Equipment & Reagents
- Orthopedic Products
- X-Ray Products
- Hospital Beds Manual & Electric
- Hospital Equipment
- Industrial Safety Supplies
- Away from Home Products
- I.V. Fluids
- Oral & Injectable Medicines



WHO WE ARE

We are an exclusive Distributor, Wholesaler and Retailer of Medical Equipment, Products and Supplies.

OUR MISSION

To provide innovative medical products that effectively respond the needs of the society, enabling our clients to have a reliable source of products and services that strives to keep the environment safe and to give our employees opportunities to develop their professional competitiveness imbued with values of service and excellence.

OUR VISION

To be a dominant player in the Medical Industry whose growth enhances its multinational presence providing excellent service to its clients.

OUR OBJECTIVES

1. To be a major player in the timely delivery of quality medicines, medical, dental and hospital products.
2. To make affordable medicines accessible to the people especially to the urban poor and the rural areas.
3. To build a corporate identity where social responsibility is the gauge of business success.
4. To remain true to the belief that a committed and loyal employee comes from a truly beneficial relationship built on trust and dedication.

OUR VALUES

NEMRAC is founded on Love of God and Country, Professionalism & Integrity, Commitment to Clients, Leadership by Example, Social Responsibility and Team Work



LIFE-BASE III MCI WITH MEDUMAT EASY CPR, MODUL OXYGEN AND 3-WAY ADMINISTRATOR

- MEDUMAT Easy CPR (WM 28140)
- MODUL Oxygen (WM 22360)
- 3-way administrator pre-set to 10 l/min per outlet (WM 3834)
- 2-liter oxygen cylinder (WM 1822)
- OXYWAY Fix III empty (WM 30301)
- Administrator with Walther quick-coupling (WM 8220)
- Pressure hose (WM 22869)
- Adapter for MODULs (WM 22265)
- 4 inhalation masks with connection hose (WM 1429)
- LIFE-BASE III portable system, pre-assembled (WM 8227)
- Protective bag (WM 8295)



BT-350E / 350L FETAL MONITOR

- BT-350 LCD is an Antepartum Fetal monitor displaying FHR, and FM on the LCD screen to check fetal health.
- BT-350 LED has the same functions as LCD type except having large 7-segment LED showing all the setting parameters and not having trend mode.
- It has also a event marker enabling a pregnant woman in the bed to indicate fetal movement point by pushing the button herself when she feels fetal movement.
- BT-350 indicates FHR as numeral by irradiating ultrasound at the abdomen, abstracting doppler frequency of heart beat cycle from the signals reflected from fetal heart, and outputting FHR change as sound, and analyzing these signals. Besides, you can measure UC by using pressure sensor.
- BT-350 prints FHR, UC, and FM on the thermal paper and displays them on the LCD display. Especially, the doppler probe has 9 crystal sensors for catching FHR effectively, and it is water-proof type. BT-350 has 2 kinds of installation functions such as notebook, and wall mount.



EMERGENCY VENTILATOR MEDUMAT STANDARD²

- Quick and easy access to the right ventilation with entry of height or via emergency mode for adults, children and infants
- CPR mode for guideline-compliant cardiopulmonary resuscitation
- RSI mode for reliable support with induction of anesthesia
- CPAP mode with optional pressure support ASB for non-invasive therapy in pre-hospital treatment
- Optional: Sidestream capnography for ideal monitoring of ventilation treatment
- Optional: Flow measurement for improved monitoring during ventilation, resuscitation or induction of anesthesia (Mve, Vte, ftotal, fspont, Vleak), Curve display



MEDUMAT TRANSPORT VENTILATOR

- Device ready for immediate use
- Simple, intuitive operation
- Ventilation of adults and children
- Hygiene input filter protects from contamination
- Several functions for different ventilation modes
- Wireless data transmission via Bluetooth® (optional)
- Customized pre-configuration
- The portable systems meet your mobility requirements



BT-740 PATIENT MONITOR

- 8.4" color TFT touch screen
- ECG, Resp., SpO2, NIBP, Temp.,
- Ultra-low power consumption
- Fan-less design, super silent
- Accurate SpO2 performance during motion and low perfusion
- Perfusion index display, pitch tone variation for pulse rate
- USB support for future upgrade and data transfer
- Over 6 hours continuous working on battery
- 12-15V wide range DC input, suitable for ambulance
- Capable to connect with central monitoring system



BT-770 PATIENT MONITOR

- 12.1" color TFT touch screen
- ECG, Resp., SpO2, NIBP, Temp.,
- Precise ECG measurement with pacemaker detection
- ST segment and 16 types of arrhythmia analysis
- Double overpressure protection for NIBP
- Intelligent cuff inflation pressure adjustment
- Smart Hook/Stand design, provide multiple placement modes
- Plug & Play Modular IBP& C.O., Modular Printer
- Multiple configuration options: 4-channel
- IBP, CO2, invasive C.O., Multi-gas
- Over 5 hours continuous working on battery
- 12-15V wide range DC input, suitable for ambulance
- Capable to connect with central monitoring system



LITHOLYME CARBON DIOXIDE ABSORBENT

- Affordable and efficient, with maximum safety
- Litholyme® is a new carbon dioxide absorbent for medical use that eliminates the common concerns with traditional soda lime based products in that it eliminates the potential for production of compound A, carbon monoxide, and excessive heat. Its patented formula does not contain any NaOH or KOH, and features a permanent color change that will not revert over time.
- Suitable for low flow applications, minimally exothermic, and its patented formula does not interact with sevoflurane or other commonly used inhalation anesthetic agents, even under fully desiccated conditions.
- Features an off-white to violet color change that is permanent and profound, indicating both exhaustion and/or desiccation and eliminating the possibility for inadvertent use of expended product

DIFFERENCE OF TRADITIONAL VS PREMIUM

Traditional

- Contain NaOH or KOH.
- Degrades Anesthetic Gas to produce compound A & CO and can be hazardous when dried out High Ph level, hazard for patients and its users.
- Caustic to handle Produce High heat

Premium

- Premium formulas contain no NaOH or KOH
- Does not degrade anesthetic gas to produce hazardous chemical even if completely desiccated
- No color reversion- color stays permanently Purple
- Lower Ph, safer for the patient and less caustic to handle
- Produce less heat
- Absorption efficiency is higher than Traditional -- excess of 160 L of CO₂, higher than any traditional or Premium
- Carbon Absorbent



GOMCO CIRCUMCISION CLAMPS

- Designed to be easy to use and provide a safe and consistent result, these chrome-plated circumcision clamps come in a variety of sizes for different glans diameters from newborn to adult
- **Circumcision of the Newborn** - With newborns, the clamp generally does not require sutures, rarely produces bleeding, and consistently leaves a clean-cut incision which uneventfully heals in 36 hours (as the mucous membrand and skin become securely united), leaving a clean and natural appearance.
- **Adult Circumcision** - The adult circumcision clamp is a modified version of the infant instrument. Different anesthetics and antiseptics are required for adult circumcision.

OUR PARTNERS





The will to succeed has always been the paramount driving force for Mr. and Mrs. Apolinar Carmen as they waded through many years of sacrifice and perseverance through faith that NEMRAC Corporation would become what it is today.

Established on February 11, 1998, NEMRAC has grown from a weakling that was virtually unknown in the industry to a strong and stable corporation profuse with recognition and public acceptance. Mr. Apolinar U. Carmen, the registered owner, is the President and Chief Executive Officer (CEO) while His wife, Eleanor G. Carmen is the Corporate Treasurer and Vice President for Operations and Purchaser.

NEMRAC is proud that in over a decade of its existence, the quality services that it continues to provide their clients has become the engine that sustains its operations. Through hard work, perseverance and an abiding belief in God's loving providence, NEMRAC has established satisfied and loyal clientele that keeps patronizing its products and services.

It gives so much joy and satisfaction to Mr. and Mrs. Carmen that the vision and mission of the company is being continually realized. This is because even with the most daunting trials the company has gone through, they never wavered in their trust in God. They have used NEMRAC to glorify God in their success. The business exists primarily for the service of humanity and it grows and develops because of its commitment and dedication to its ideal. The corporation is grounded on the Christian value of service to humanity.

As it grows in resources, products and clientele, NEMRAC has become even bolder in its dream to be the dominant player in the industry. Its two stores in Bambang, Manila capture a sizable share of the market thus spreading the brand of products and services it provides.

Its wholesale local distribution buttresses its supply chain with importations of medical, dental and laboratory supplies, clinical reagents, diabetes care products, hospital beds and equipment, medical devices, generic, branded medicines, I.V. fluids and high-quality tissue paper products.

NEMRAC is the exclusive distributor of several products like Litholyme Co2 absorbent, Gomco suction machine, aspirators, resuscitators, minilators, valve masks, Schuco nebulizer, and Shuco table top suction machine. Other line products are TENA Incontinence Products, DRYPERS Baby diapers, ROCHE Diabetes Care Products, BIOSYSTEMS Clinical Diagnostic Kits and Laboratory Reagents, EUROMED IV Fluids and products as well consumer tissue products.

The company has four warehouses strategically located at No. 24 Duhat Street, Aurora Subdivision, Angono, Rizal, 246 Vicenta St., Cainta, Rizal, Tomas Mapua St., Sta. Cruz Manila and Bambang St., Sta. Cruz Manila. Local distribution is done through the business delivery van while distribution to other areas like Batanes, Aklan, Iloilo, Dumaguete, Palawan and Davao is through ship/plane cargoes. In October 16, 2012 NEMRAC was granted the exclusive distributorship in the Philippines of all Allied Healthcare Product, Inc. from St. Louis, Missouri, USA. And at present the company has acquired more distributorship since.

Top officials of the corporation have attended Convention and Seminars such as the Philippine Hospital Association (PHA) Convention, where the company has participated as one of the exhibitors during the PHA Annual National Convention in the year 2007 up to present as well as the Regional Marketing Convention of Allied Health Products, Inc in Bangkok, Thailand in May 2013, 2014 in Hongkong, 2015 in Taipei, and 2016 in Bali, Indonesia.

NEMRAC's manpower consists of Five (5) Sales Representative and fifteen (15) office workers and laborers. With its continuous expansion program, the company is in the process of hiring the services of more sales representatives and other personnel.

NEMRAC's main office and warehouse is at No. 24 Duhat St., Aurora Subd., Angono, Rizal with Manila branch offices at Unit 1-C Goodway Condominium, No. 1555 Bambang Street, and 1429 Rizal Avenue, Sta. Cruz, Manila.



CONTACT US

MANILA BRANCH AND OFFICE:
UNIT 1-C GOODWAY
CONDOMINIUM, NO. 1555
BAMBANG ST., STA CRUZ,
MANILA

UNIT 203 TCI TOWER, WEST
CAPITOL DRIVE
BRGY KAPITOLYO, PASIG CITY
1603

TELEPHONE NO.:
(02) 742-4188
(02) 749-5377
(02) 708-0190

FAX:
(02)742-3886

EMAIL:
sales@nemrac.com.ph

BUSINESS HOURS

MON-FRI: 9AM TO 5PM
SAT: 10AM TO 2PM
SUN: CLOSED